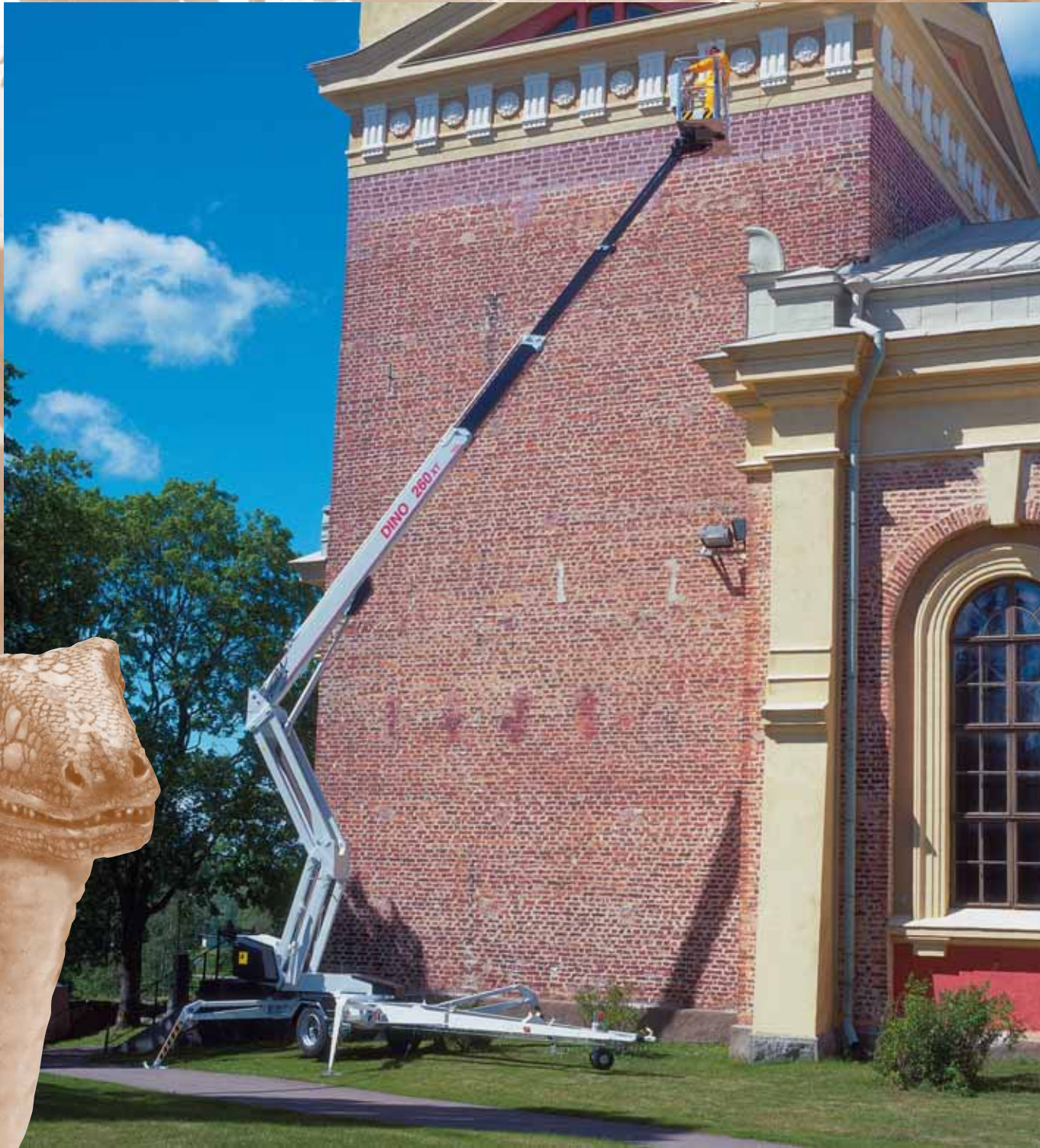
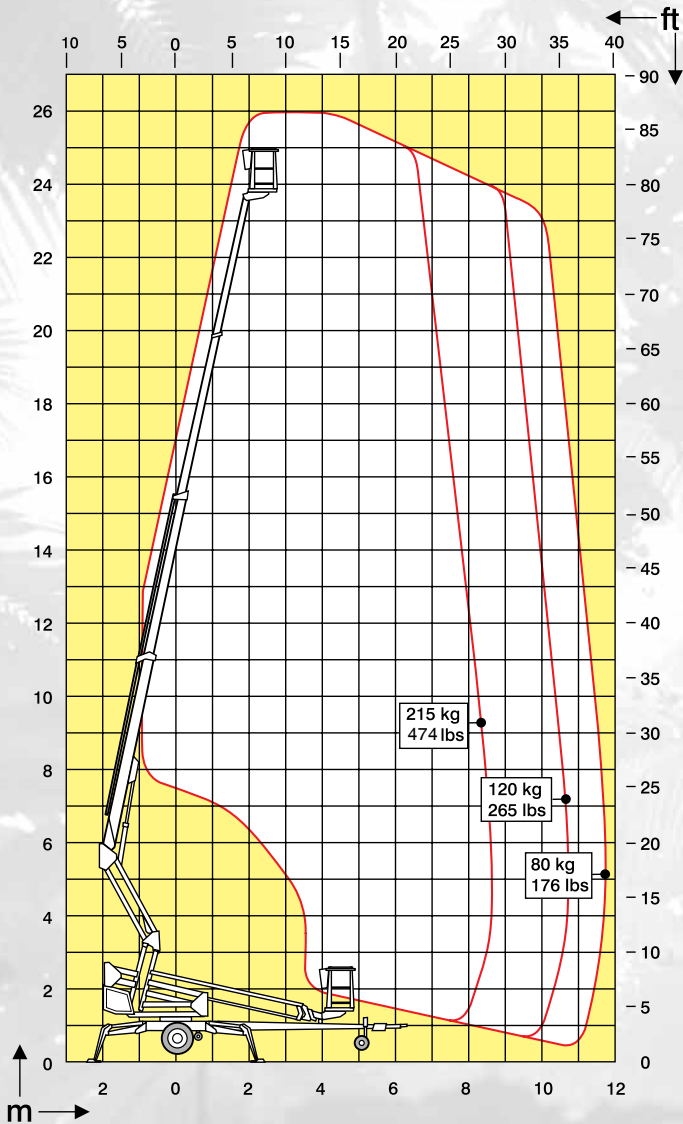


# **DINO<sup>®</sup> 260XT**

**Visibly above the others**



# Technical specification on DINO® 260XT



The basket of the DINO 260XT is spacious. Stepless control of boom movements is possible with two joysticks.



The DINO 260XT has a riser that gives the unit an up-and-over capability.



The drive mechanism enables the DINO 260XT to be moved easily around the job site. The system is switched on hydraulically.

<b>Working height</b>	<b>26,0 m</b>	<b>85'5"</b>
<b>Platform height</b>	<b>24,0 m</b>	<b>78'10"</b>
<b>Maximum outreach</b>	<b>11,7 m</b>	<b>38'5"</b>
<b>Support width</b>	<b>4,4 m</b>	<b>14'5"</b>
<b>Lifting capacity</b>	<b>215 kg</b>	<b>475 lbs</b>
<b>Basket size</b>	<b>0,7 x 1,45 m</b>	<b>2'4" x 4'9"</b>
<b>Boom rotation</b>	<b>continuous</b>	<b>continuous</b>
<b>Basket rotation</b>	<b>90°</b>	<b>90°</b>
<b>Boom control</b>	<b>proportional</b>	<b>proportional</b>
<b>Transport length</b>	<b>8,25 m</b>	<b>27'1"</b>
<b>Transport width</b>	<b>2,04 m</b>	<b>6'8"</b>
<b>Transport height</b>	<b>2,33 m</b>	<b>7'8"</b>
<b>Weight</b>	<b>3450 kg</b>	<b>7600 lbs</b>
<b>Driving system</b>	<b>standard</b>	<b>standard</b>
<b>AC-socket in the basket</b>	<b>standard</b>	<b>standard</b>
<b>Power supply</b>	<b>230 VAC</b>	<b>230 VAC</b>
<b>Gradeability</b>	<b>25 %</b>	<b>25 %</b>
<b>Equipped with petrol aggregate</b>		
<b>Diesel aggregate</b>	<b>optional</b>	

The specification is subject to change without notice.

DINO® and Dino Lift® are trademarks registered by the company Dino Lift Oy.

Manufacturer

## DINO Lift®

Dino Lift Oy, Raikkolantie 145, FI-32210 Loimaa, Finland  
 Tel. +358 2 762 5900, Fax +358 2 762 7160  
 E-mail: dino@dinolift.com, www.dinolift.com

