



E. FALCK SCHMIDT A/S

Spider TST 29

NEW



Photo: Spider TST 29, 29 m working height. Introducing new 260° articulated, telescopic jib (6 m.)

The Spider is based on more than 30 years of development and manufacture of aerial work platforms. The Spider concept was introduced to the market in the late 1970s and since then several hundred machines have been delivered all over the world.

The Spider is produced in working heights from 45ft/14m to 180ft/55m. (Highest compact platform of the world) All models are special designed for work in buildings where space is limited and requires flexible access and maximum platform manoeuvrability.

Key performances like: Compact design, flexibility, reliability, low weight, high reach and maximum safety are features, experienced users all over the world value every day.

The latest additions in the serie, the **Spider TST 23, TST 29, TST 36 & TST 55** are improved and enhanced models offering *new* unique features, like an *innovative* 260° articulated, telescopic jib, length up to 6m. and a *new* designed larger basket.



Ν. ΣΤΑΦΥΛΟΠΑΤΗΣ Α.Ε.

Ανυψωτικά μηχανήματα - Συστήματα διακίνησης

ΓΡΑΦΕΙΑ - ΕΚΘΕΣΗ

ΛΕΝΟΡΜΑΝ 68
& ΠΑΛΑΜΗΔΙΟΥ
104 44 ΑΘΗΝΑ

ΤΗΛ.: 010 514 7887
512 3268
513 4345

FAX: 010 513 4518
e-mail: stafilop@otenet.gr
www.stafilopatis.it

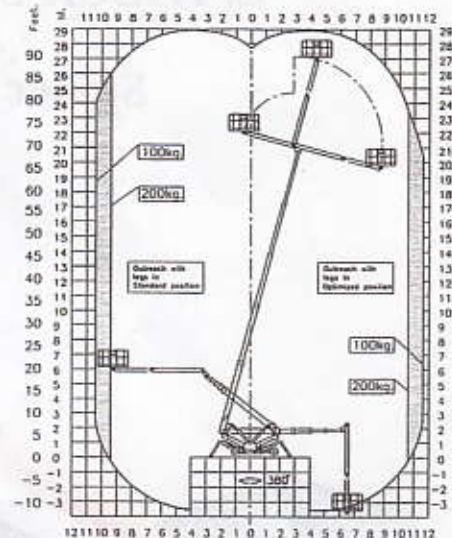
Technical data for the Spider TST 29
(Standard equipment).

| | |
|------------------|---------------------|
| Working height*: | 29.0 m*/95.2 feet |
| Basket height: | 27.2 m/89.3 feet |
| Turret rotation: | 375° |
| Jib rotation: | 260° |
| Basket (steel): | (W x L : 0,8 x 2,0) |
| Basket load: | 200 kg/440 lbs |

Measurements (stowed):

| | |
|--------------------------------|--------------------|
| Total height: | 1.98 m/6.6 feet |
| Total length: | 6.15 m/20.2 feet |
| Total width: | 0.79 m/2.6 feet |
| Gradeability (standard drive): | 5°/9% |
| Gradeability (3-wheel drive): | 10°/18% |
| Weight approx. | 3500 kg**/7000 lbs |

Reach diagram Spider TST 29



** Depending on optional equipment

*Outreach depend on positioning of outriggers and basket load.

STANDARD PERFORMANCE AND FEATURES:

- * Access through 0,8m x 2,0m wide door openings.
- * Working height, up to 29 m in the matter of minutes.
- * 24V battery power system, chargeable via 220V. (Dual power system, diesel engine, available as option)
- * Self-propelled electro hydraulic drive system.
- * Full hydraulic telescoping of main booms.
- * 375° turret rotation, with integrated stop. (Continuous rotation available as option)
- * Multi-positioning outriggers allow individual adjustment and setting of each leg in both horizontal and vertical places.
- * The hydraulic/manual outriggers can be leveled up to 8.5° of slope.
- * The Spider is due to the unique outriggers self-loading on trucks and trailers.
- * 260° articulated telescopic jib, length up to 6 m, ensures maximum flexibility and performance. (Hydraulic telescoping, available as option)
- * Proportional control of all functions via joysticks.
- * Automatic safety and stability system ensures optimum outreach and maximum safety.
- * Dual operation controls at turret and in the basket.
- * Comply U.S and European CE-standards.
- * Manual pump system for lowering of the basket in case of emergency.

... And much, much more.

OPTIONAL EQUIPMENT

- * Diesel-powered system for both lift and chassis movements. (Hatz silent pack)
- * 180° hydraulic rotateable basket.
- * 360° continuous turret rotation.
- * Hydraulic telescoping of jib arm.
- * Rubber-clad supporting outrigger plates for use on sensitive flooring.
- * 220 V power supply in the basket.
- * 3-wheel drive system. (Gradeability up to 10°/18%)
- * Special colour according to customer request.
- * White non-marking tires.

... And much, much more.

Spider
- the safe choice for the future